



**XV WORLD PARAGLIDING  
CHAMPIONSHIP**

Montalegre, Serra do Larouco

**PORTUGAL**

# INTRODUCTION

## **“The perfect site with the perfect weather for World Class Competitions”**

At the moment Montalegre is one of the best places for cross-country flights in Portugal. Its excellence, proved by frequent long distance flights year round, makes it a usual place for leisure flight and also a choice for National competition events, PWC and other Open class competition.

The FPVL experience in organizing competition events (ability demonstrated in the organization of the 8th World Paragliding Championship, 2003 edition, held also in Montalegre) and the commitment of local authorities on taking advantage of the good conditions for sports promotion, make the place a natural choice for organization of a World Paragliding Championship.

Serra do Larouco Mountain is the third highest elevation in Portugal's mainland, with its main peak situated at 1525m (5003 feet). Widely known and quite looked for, nature sports and especially as a cross-country flying area.

The increasing touristic demand for nature sports, the spas, the delightful tours around the mountain, the good accommodation and the famous restaurants and gastronomy have increased year after year, making Larouco Mountain area one famous holiday destinations in Portugal.

Montalegre village is widely known for its tourism development, namely adventure sports.

This is a region of extremely beautiful and natural landscape which have provided, throughout the centuries, the necessary resources for the manufacture of its typical and well known products.

The natural heritage of this region is absolutely astonishing, with fabulous places worth to be known.

The headquarters of the flying site, Serra do Larouco on the village of Montalegre, is situated at about 990 meter high.

**BID FOR  
WORLD PARAGLIDING  
CHAMPIONSHIP 2017**

July 22th - August 6th, 2017

MONTALEGRE | Serra do Larouco | PORTUGAL  
FEDERAÇÃO PORTUGUESA DE VOO LIVRE



**ANNEX A**

DETAILED INFORMATION

## ORGANIZER

FPVL – Federação Portuguesa de Voo Livre (Portuguese Free-flight Federation)

With direct support of:

- Câmara Municipal de Montalegre (Montalegre City Council)
- Local paragliding club and school “Papaventos”
- Technical and logistics support of WIND - Centro Actividades de Montanha.

Besides the direct support enumerated above, the organization has granted the support of the following entities:

- ✓ AeCP – Aero Club de Portugal (Portuguese NAC)
- ✓ Força Aérea Portuguesa (Portuguese Air Force)
- ✓ Turismo de Portugal (Portuguese Tourism Office)
- ✓ NAV (Portuguese Air Traffic Control)
- ✓ INAC (Portuguese Civil Aviation Institute)
- ✓ IPDJ (Portuguese Sports Institute)
- ✓ Cruz Vermelha Portuguesa (Portuguese Red Cross)

## ORGANIZER ADDRESS

[Federação Portuguesa de Voo Livre](#)

Avenida Cidade de Lourenço Marques

Módulo 2 Praceta B

1800-093 Lisboa

Portugal

Email: [geral@fpvl.pt](mailto:geral@fpvl.pt) Phone: +351 218522885

## PROPOSED DATES

MAIN EVENT - July 22th to August 6th

PRE WORLD EVENTE – Dates to be defined

## TASK FLYING AREA

The flying community in Portugal uses to say that if one wants to fly high and far, with good weather conditions, with very safe conditions, than Larouco - Montalegre is the place to go.

The cross-country flying season starts in May and lasts until August. From June to August, climbing over 3000 meters and reaching distances larger than 150 km is a frequent achievement.

The flying area is situated on the north of Portugal with high mountains and open valleys, surrounded by vast plains to several directions, the place is a perfect and secure for cross-country flights. Especially good, for local triangulations up to 100km.

There is a wide range of possibilities for task setting. Depending of the weather conditions, the tasks can consist on triangulations held in the range of the Mountain, or expand into the adjacent flat lands, with legs to several directions.

The area is in general easy to fly. There are no remarkable dangerous places, the visibility is good and the obstacles are normally clearly noticed.

Generally there are no forbidden places, to fly over or landing. Although the organization go seek for authorization from the owners of fields chosen to be used as goals, by norm any fields with no agricultural plants, can be used for landing. There are no records of any adverse reaction from the owners of fields used for unplanned landing.

The exception to these, are some aerodromes located on the area, that pilots should avoid fly over or cross the approach lines to land and takeoff.

## LAUNCH SITES

The region offers several take off sites and flight possibilities, reason why it has been used for long time by many clubs and schools.

Over the years, Clubs, Associations and local Authority's in conjunction with the FPVL have hosted many events in Montalegre, several of which have had more than 120 pilots. Namely:

Regular Portuguese Championship competitions since 1999, and:

- ✓ PWC in 2000
- ✓ World Cup in 2003
- ✓ Nordic Open 2003
- ✓ Iberian Cup in 2006, 2007 and 2009
- ✓ British Open 2005
- ✓ Pré-PWC in 2010
- ✓ PWC in 2012
- ✓ PGAWC in 2013
- ✓ Iberian Open in 2013 and 2014

- ✓ PWC in 2015 (already confirmed)

Without doubts that Montalegre, is a place weel-know and used to receive great paragliding events. The reviews from the participants are very good, what makes the pilots and events to come back to Montalegre.

**Main take off site: Serra do Larouco South (N 41° 52.888' W 007° 43.155')**

- ✓ **Access:** Asphalt road from HQ and from official landing field to the Take-Off. Total time from HQ to take-off between 15 to 20 min.
- ✓ **Altitude:** 1525m AMSL
- ✓ **Height above valley:** 520m
- ✓ **Size of take-off area:** Very large Takeoff with grass, suitable for several gliders at once
- ✓ **Surface:** Natural Grass
- ✓ **Wind direction:** Mainly South
- ✓ **Wind Flight conditions:** Take off is possible with any wind direction, for wind speeds under 10km/h. South wind take off.
- ✓ **Landing:** Plain field on the valley, near the village Gralhas N41° 56.063' W007° 42.0965'

**Alternative take off site: Serra do Larouco North (N 41° 55.105' W 007° 42.0903')**

- ✓ **Access:** Asphalt road from HQ and from official landing field, to Serra do Larouco and dirt road about 2 km
- ✓ **Altitude:** 1250m AMSL
- ✓ **Height above valley:** 430m
- ✓ **Size of take-off area:** 2 Larges Take-Offs, with Grass, suitable for several gliders at once
- ✓ **Surface:** Natural Grass
- ✓ **Wind direction:** From Northeast to Northwest (a round shape hill top makes possible take off with all these wind components).
- ✓ **Wind Flight conditions:** A resident thermal in front of take off suits well for flights even in the early morning hours.
- ✓ **Landing:** Plain field very large with several fields around N41° 56.063' W007° 42.0965'

**Alternative takeoff site: Serra do Larouco West (N 41° 53.141' W 007° 43.517')**

- ✓ **Access:** Asphalt road from HQ and landing area to take-off. Total time about 15 to 20 min..
- ✓ **Altitude:** 1500 AMSL
- ✓ **Height above valley:** 350m

- ✓ **Size of take-off area:** Large Take-Off suitable for several gliders at once
- ✓ **Surface:** Natural Grass
- ✓ **Wind direction:** From West to Northwest
- ✓ **Wind Flight conditions:** Good thermal in early evening for West and North winds. Mild thermodynamic flight in the evening with weak winds from west.
- ✓ **Landing:** Plain field near the road on the valley, N42° 01.588' W007° 41.771'

## FACILITIES AT SITES (TAKEOFF AND LANDING)

### Serra do Larouco takeoff (main takeoff):

Refreshments; 2 shelter tents; One Media tent; 4 portable toilets; power generator; wifi;  
Parking for organization, team vehicles and visitors.

### Official Landing:

Refreshments and a shelter tent.

All Takeoffs, Landing places and Goals, will be equipped with Win-socks of large size.

## AIRSPACE AND OTHER RESTRICTIONS

NOTAM's will be issued for the competition, allowing the use off the airspace with no restrictions.

The normal maximum altitude allowed for events in the area is about 3000m ASL. The organization had initiated conversations with the authorities in order to get clearance for a higher limit during the competition hours.

## SAFETY ISSUES

In general the area and the launch sites have no special safety issues. During the last 15 years there have been no fatalities or serious accidents during competitions.

## MAPS OF TASK AREA







## TRANSPORT & RETRIEVES

The organizers will have available the following logistics for pilots and equipment transport and retrieve:

- ✓ Two bus (59 pax) for pilots transport in tarmac roads and to main take off area;
- ✓ 5 four wheel trucks with 5 seat places and capacity for the transport of 5 wings each for all kind of transport and retrieve;
- ✓ One truck (70 wing capacity) for all kind of equipment transport to take offs and retrieves;
- ✓ One van with 9 seat places and capacity for the transport of 20 wings for all kind of transport and retrieve;
- ✓ 1 Van for mobile retrieval base;
- ✓ 1 mini-van with 5 seat places and capacity for the transport of 5 wings for all kind of transport and retrieve;

All vehicles will be fully equipped with mobile cell phone, radios, driver and chiefs car.

All the retrieving control will be based on positioning through the GPS coordinates transmitted by pilots after landing. The live-tracking system will be used as part of the retrieving system.

## RESCUE / MEDICAL SERVICES

During competition several rescue and medical means will be provided, in the takeoffs and landing field (Goal).

Rescue will be assured by firefighters present at all time on the site for land rescue in forests or remote places. Helicopter will be in prevention, in Vila Real, at about 20 minutes from Montalegre.

A medical emergency team (including a doctor) with a fully equipped ambulance, and another all terrain will be present at take off or on the way to goal during all competition days. This service will be assured by an experienced organization. Negotiations with INEM (National Institute of Medical Emergency) and with Portuguese Red Cross are in course.

Additionally the National Emergency Medical Service, has an Helicopter in permanent alert, with a response time about 15 min, for intervention in case of severe injury.

Montalegre village has a first aid medical centre:

[Centro de Saúde Montalegre](#)  
Rua Lama do Moinho, nº 400  
5470-225 Montalegre

Telephone: +351 276 510 160

The nearest Hospital is in Chaves City (45km, about 40 minutes by car and 10 minutes by helicopter):

[Hospital Distrital de Chaves](#)

Av. Dr. Francisco Sá Carneiro

5400-249 CHAVES

Telephone: +351 276 300 900

The nearest Hospital with full A&E facilities and surgical capability is in Vila Real town (94,4Km, about 1:10h by car and 20 minutes by helicopter):

[Centro Hospitalar de Trás-os-Montes e Alto Douro](#)

Avenida da Noruega

5000-508 VILA REAL

Telephone: +351 259 300 500

The better-equipped Hospital with full A&E facilities and surgical capability is in Porto town (180Km, about 2:00h by car and 35 minutes by helicopter):

[Centro Hospitalar São João](#)

Alameda Prof. Hernâni Monteiro

4200-319 PORTO

Telephone: +351 225 512 100

## LIAISON WITH POLICE, MILITARY, PUBLIC SERVICES

All authorities with relevance for civil protection have been contacted and are in support of the event

## INSURANCE

All pilots must have insurance with the following coverage:

- ✓ Third party liability insurance 1 600 000,00€
- ✓ Personal accident insurance, including life, medical and repatriation minimum value of 27 000€

Pilots who do not have insurance will not be allowed to compete. Any pilot arriving without a valid insurance for the Portuguese territory or holding one with insufficient coverage can subscribe it on registration. The price will be 80€.

## LIVE TRACKING

In order to provide improved safety by facilitating the location of pilots in case of incident/accident a live-tracking device will be provided to every competitor.

The system will also be used as a retrieval help tool and to facilitate non-competitors to follow the competition.

We will use the Flymaster system, whose sponsorship has been assured.

## COMUNICATIONS

Operation of radio frequencies without license is forbidden in Portugal, unless you are a registered Radio Amateur and operates on citizens band or other small range devices.

For this reason the team leader entry fee will include the licensing for a legal individual team frequency to be used during the event.

Teams without team leader that also want to use a radio frequency, must acquire that license in separate. Details will be available on event site.

## MOBILE CELL PHONE COVERAGE

Coverage is good at most of the flying area except for remote valleys. In all flying area there is a good coverage by the 3 operators MEO, NOS and VODAFONE. Normally 4G is also available.

## WEATHER

Located in the extreme west of Europe, 40 degrees north latitude, by the Atlantic Ocean and next to the Mediterranean Sea, Portugal has a temperate climate with warm and long summers with little rain and moderate mild winters with moderate rainfall.

In the North of Portugal, Serra do Larouco mountain range provides many flyable days throughout the year. Summer time is obviously the best time. The Montalegre place has usually more than 50 days per year with very good Cross Country flight conditions. Most days thermal tops vary between 3200m and 2500m. In warmer years it's usual to achieve 3500m climbs and, sometimes even 4000m.

In summer time the center of the Iberian Peninsula forms a heat generated depression, leading warm and dry air with low wind speed from East that influences the quality of free flight. These



winds make a confluence with the West Atlantic winds with cooler and moist characteristics. This confluence provides excellent flight days with very good thermal quality.

In days of weak wind, it's easily possible to fly throughout the mountainous massif in triangles varying from 50 to 100 Kms. In the 2012 PWC, in Montalegre, on the 4 validated tasks, 1 task goal of 100km was made in triangle, and other 2 tasks were over 80km.

Weather in the region has been proven suitable for XC competition during the summer months since almost 15 years.

## METEOROLOGY

Several kinds of forecasts will be used, namely meteograms and aerological diagrams (Skew-T/Log-P) from the following internet sources:

- ✓ A private access area of the Portuguese Meteorology Institute
- ✓ Air Resources Laboratory from NOAA (National Oceanic and Atmospheric Administration) - <http://www.arl.noaa.gov/ready/cmet.html>
- ✓ XC Skies - Soaring Forecast Maps & Tools - <http://www.xcskies.com>
- ✓ Meteoblue - <http://www.meteoblue.com>
- ✓ A free-flight weather directory run by Fernando Amaral for many years will of course be available: Portal Meteo – FA - <http://meteo-fa.web.pt/>

## EVENT HEADQUARTERS

The Headquarters will be installed on [Pavilhão Multiuse Montalegre](#), a great complex in Montalegre, used since several years as paragliding competitions HQ.

The Headquarters with 2000m2 is used for several events around the year, and presents all the conditions necessary, being located right in the middle of the village of Montalegre:

- ✓ Wireless Internet access for pilot use.
- ✓ Auditorium for briefings, with 320 seats
- ✓ Ventilation System
- ✓ Task information and progress screen
- ✓ Several, Toilets for men and women
- ✓ Printers Scans and Faxes.
- ✓ Public Phone
- ✓ Presentation equipment for organization & FAI officials.
- ✓ Meeting rooms for teams, and organization staff
- ✓ One separate toilet for organization & FAI officials.
- ✓ Sports hall
- ✓ Gymnasium
- ✓ Big car parking

- ✓ Place where the pilots can leave the gliders, even during the night
- ✓ Area to do gliders check (covered space)

## LOCAL FACILITIES

Besides the specific infrastructures that will be in place specifically for the event, Montalegre offers several facilities and activities that pilots and teams can take advantage of. Is fully equipped with all kind of public services, such as hotels, restaurants, banks and a first aid medical center. Some that we can highlight:

- A lake with beach, good for KitSurf, and other sports.
- Camping Park
- Montalegre Hotel, with Spa
- Several B&B and Rural Tourism lodging
- Shop for local products
- Several Bars and Cafeteria
- Supermarkets and other stores

Besides paragliding, there several regularly organized activities like: BTT; River Baths, Canoeing; Challenge; Climbing; Constellations identification; Bird Watching; Thematic Games; Nature Games; Meditation; Nocturne Tours; Walks; etc.

## MEDIA COVERAGE

The organization pretends to give an appropriate projection to the event. Such goal will be possible through a complex media coverage reaching a wide range of media, information and entertainment platforms.

Newspapers, magazines, TVs as well as internet, will be fed with multiple content from video trough photo and text reports.

Within products and services that will be created, we present the following highlights:

- Full Video coverage with multiple crews producing daily imagery;
- Media Center producing daily rushes and feeds for TV's access through a dedicated server;
- Daily summaries for Webcasts;
- Live, on-location Webcasts on a daily basis with general images, interviews and comments;
- Professional Photo Crew for full photographic coverage with daily photo-packs;
- PR Office with daily production of Press-release and media distribution;
- Journalist's management, reception and PR coordination for easy, full access to the event's action;

- Production of a final TV documentary to be broadcasted on national TVs as well as distributed throughout several countries

The daily produced contents, will be processed as soon it comes to the Media Center and immediately edited. Each day, a series of interviews will be made to feed content's database as well as to be used for the Live Webcast later in the evening. The subjects may vary in case of non-flying days, but there will always be a story to be told! National as well as international media partners as papers, magazines, websites, TVs, etc, will receive releases and media packs including Text, Photos and Movies available for download. All this media will be available in professional Broadcast file formats as DVCAM and XDCAM, TIF, JPG as well as Web H264.

Wrapping up the event, a 26min Documentary will be produced in order to be distributed to National and International Broadcasters and DVD production.

We have budgeted the Media coverage in three levels for us to guard against failure in obtain the necessary sponsorship. So we recommend all teams needing media contents to previously get in touch with the organization in order to see whether is necessary to bring their own crew to be integrated, or rather just a part of it, taking advantage of our contents for the rest of the work.

## COMPETITION WEBSITE

All the information for the event will be available on the event website

<http://www.fpvl.pt/pgworld2017>. This website will be published timely.

Online registration and payment facilities will be included.

## ORGANIZERS DIRECTORS AN KEY OFFICIALS

FPVL Coordinator	António Fernandes
General Coordinator	Samuel Lopes
Meet Director	Fernando Amara
Safety Director	Pinto da Silva
Chief Launch Marshal	José Cardoso
Chief Goal Marshal	Ian Lopes
Meteorology	Fernando Amaral
Retrieves Coordinator	Pinto da Silva



Logistics	José Cardoso
Scoring	Sérgio Parreira
Web master	Sérgio Parreira
Pilots & Public Relations	Valentina Correia
Media Coordinator	Luís Miguel Matos

## KEY OFFICIALS CURRICULUM 'S

### António Fernandes – FPVL Coordinator

- ✓ Computer Engineer consultant
- ✓ Paragliding Pilot since 1990
- ✓ Paragliding Competition Pilot since 1998
- ✓ Organizer of the Following events/competitions
- ✓ Open Paragliding of "Porto da Espada" on the years 2001, 2002 and 2003
- ✓ Member of Directory Board of FPVL (Portuguese Free Flight Federation) since 2004
- ✓ Actual Vice-President of FPVL

### Samuel Lopes – General Coordinator

- ✓ Paragliding Pilot since 1993
- ✓ Paragliding Competition Pilot since 1996
- ✓ National Paragliding Instructor since 1996
- ✓ General Coordinator of paragliding events since 2004, including:
  - National Championships (more than 15 events)
  - 3 Iberian OPEN
  - 1 PGAWC
  - 3 Pré-PWC
  - 2 PWC
- ✓ Founder and Director of WIND – Centro de Actividades de Montanha

### Fernando Amaral – Meet Director

- ✓ SAP software consultant
- ✓ Paragliding Pilot since 1995
- ✓ Paragliding Competition Pilot since 1996
- ✓ National Paragliding Instructor since 1998
- ✓ Scoring Officer at several Portuguese Championship Competitions since 1996.
- ✓ Organizer of: "Parapente Challenge manhã'97"; "XC'hallenge 2002 – Bornes"; "XC'hallenge 2003 – Bornes";

- ✓ Task setting committee member in dozens of FAI Cat.2 Portuguese paragliding competitions;
- ✓ In charge of Meteorology in: many FAI Cat.2 Portuguese paragliding competitions; 2003 World Paragliding Championships, Montalegre, Portugal; 2005 World Paragliding Championships in Governador Valadares, Brazil; 1st Pan-American Paragliding Championships, Castelo, Brazil, 2008; Word Cup Portugal, Serra da Estrela, 2010
- ✓ Stewart in: 2005 World Paragliding Championships in Governador Valadares, Brazil; 1st Pan-American Paragliding Championships, Castelo, Brazil, 2008; Assistant Meet Director in 2003 World Paragliding Championships, Montalegre, Portugal
- ✓ Meet Director in: several FAI Cat.2 Portuguese paragliding competitions, and international competitions: Word Cup Portugal, Serra da Estrela 2010 and Montalegre 2012; Pré-Pwc in 2009 and 2010.
- ✓ Team Leader of Portuguese National Paragliding Team in the 2008 European Paragliding Championships.
- ✓ Portuguese CIVL delegate since 1996
- ✓ President of the FPVL Competitions and Juries Committee since 1995

Pinto da Silva – Safety Director and Retrieves Coordinator

- ✓ Retired from the Army – Communications and Logistic area
- ✓ Paragliding Pilot since 1998
- ✓ National Paragliding Instructor since 2004
- ✓ Safety Director and Retrieves Coordinator in Paragliding events since 2004, including:
- ✓ National Championships (more than 15 events)
- ✓ 3 Iberian OPEN
- ✓ 1 PGAWC
- ✓ 3 Pré-PWC
- ✓ 2 PWC

José Cardoso – Logistics and Chief Launch Marshal

- ✓ Degree in Sports Sciences, since 2002
- ✓ Paragliding Pilot since 2004
- ✓ National Paragliding Instructor since 2008
- ✓ Logistics and Chief Launch Marshal in Paragliding events since 2004, including:
- ✓ National Championships (more than 15 events)
- ✓ 3 Iberian OPEN
- ✓ 1 PGAWC
- ✓ 3 Pré-PWC
- ✓ 2 PWC

Ian Lopes – Chief Goal Marshal

- ✓ Degree in Sports Sciences, since 2014

- ✓ Paragliding Pilot since 2012
- ✓ Chief Goal Marshal in Paragliding events since 20012

#### Sérgio Parreira – Scoring and Webmaster

- ✓ Degree in Electronic
- ✓ Paragliding Pilot since 2006
- ✓ National Paragliding Instructor since 2008
- ✓ Scoring and Webmaster in Paragliding events since 2006, including:
- ✓ National Championships (more than 15 events)
- ✓ 3 Iberian OPEN
- ✓ 1 PGAWC
- ✓ 3 Pré-PWC
- ✓ 2 PWC

#### Valentina Correia – Pilots & Public Relations

- ✓ Degree in Architecture
- ✓ Paragliding Pilot since 2007
- ✓ Public relations in Paragliding events since 2009, including:
- ✓ National Championships
- ✓ 3 Iberian OPEN
- ✓ 1 PGAWC
- ✓ 3 Pré-PWC
- ✓ 2 PWC

#### Luís Miguel Matos – Media Coordinator

- ✓ Director of Audio & Video Production Company
- ✓ Paragliding Pilot since 1987
- ✓ Competition Paragliding Pilot since 1990
- ✓ National Paragliding Instructor since 1992
- ✓ Organizer of the PWC Montalegre 2000.
- ✓ Meet Director of several competition events from Portuguese Championship, like Montalegre, Macedo de Cavaleiros, Mirandela, Linhares da Beira, Marão, among others.
- ✓ Meet director of PWC Montalegre 2000.
- ✓ Technical delegate of Paragliding World Cup Association during 4 years
- ✓ Current National Paragliding Team Leader

## FINANCE AND SPONSORSHIP

Besides the real sportive interest of holding such an event as World Paragliding Championship, FPVL have other intentions behind, like the promotion of the area in terms of Free Flight Sports



and also take the opportunity and the mobilized means to carry a large scale public promotion of Paragliding. By these reason the budget includes a significant amount on media services.

In order to achieve these goals and also to give the dignity desired to FAI Cat1 events, the budget cannot be limited to pilots entry fee.

The budget presented shall be considered the intended budget to achieve all the goals enumerated.

The guaranteed funding sources, namely: Pilots and Team leader fees; Grants from local/host town; Grants from National Federation and NAC; Are enough to carry the championship with the minimum requirements.

The other funding sources namely: Grants from tourism region, Government Sport Department and Sponsorship, have good perspectives but attending the actual economic situation, have not yet fixed values. In case of partial (or even total) failure in obtaining these funding's the expenses will be cut off in the following Items and order:

Additional media services Option2	8 900 €
Press hospitality	5 000 €
Additional media services Option1	5 400 €
Personal (will recur to volunteers)	10 000€
Rental & cleaning of portable toilets	2 300 €
Takeoff Tents	2 000 €
Option: Live Tracking System	8 500 €
Communications (Card Sims for pilots)	1 800 €
Rental/buy IT & equipment	4 000 €
Total Possible Cut off	47 900 €

## ENTRY FEE

1) Pre-worlds: Pilot entry fee 150,00€

2) Worlds: Pilot entry fee 450,00€ / Team leader entry fee 250,00€

These fees cover the following:

- a) Entry to the competition
- b) Transportation to take off
- c) Retrieve transportation
- d) Lunch pack and water
- e) T-shirt
- f) Entry to any organized events (organized by the competition) including opening and closing ceremonies
- g) Overnight glider storage in HQ during the official task days

Note: The Team Leader entry fee includes a license for a legal private VHF frequency to use during the event.

### PILOT ENTRY & TEAM SIZE

Subject to CIVL approval we wish to accept a maximum entry of 150 pilots with team sizes in accordance to the CIVL selection rule.

### FAI ENTRY RULES

The championship is open to all Countries Members and Associated Members of FAI who may enter any number of paragliding pilots not exceeding the maximum numbers of pilots allowed for each country according to CIVL rules.

### GUEST PILOTS

Guest pilots will be accepted only if all allocated spaces from FAI competing nations do not reach 150. Guest pilots will be accepted in order of the WRPS ranking. A minimum WRPS ranking position will be set up previous to meeting.

### VISA & VACCINATIONS

Citizens of the **European Union** and nationals of **Iceland, Norway, Liechtenstein** and **Switzerland** do not require a visa to enter Portugal. Have the right to reside in national territory for a period up to three months without any conditions or formalities other than the ownership of an identity card or passport valid

In addition to their identity card, minors must also present authorization from their parents to travel.

Citizens from the following Countries are exempt from visa for stays less than 90 days:

ANDORRA, ARGENTINA, AUSTRALIA, BOLIVIA, BRAZIL BRUNEI, DARUSSALAM, BULGARIA, CANADA. CHILE, SOUTH KOREA, COSTA RICA, CROATIA, UNITED STATES, GUATEMALA, HONDURAS, ISRAEL, JAPAN, MALAYSIA, MEXICO, MONACO, NICARAGUA. NEW ZEALAND. PANAMA. PARAGUAY. Romania,VATICAN, SALVADOR, SAN MARINO. SINGAPORE, URUGUAY, VENEZUELA, Special Administrative Regions of the People's Republic of China in Hong Kong and Macao.

Citizens from countries not mentioned above need a visa to enter Portugal, which may be requested at the Portuguese Embassy or Consulate of their country for stays of up to 90 days.

Under the terms of the Convention Implementing the Schengen Agreement, flights between Schengen states are considered to be internal flights and passengers do not need to obtain another visa.

#### Related links:

Portuguese embassies and Consulates - <http://www.portugal.gov.pt/pt/os-ministerios/ministerio-dos-negocios-estrangeiros/quero-saber-mais/sobre-o-ministerio/representacoes-diplomaticas-portuguesas/embaixadas-e-postos-consulares.aspx>

Portuguese Immigration Authority - <http://www.sef.pt/portal/V10/EN/asp?page.aspx>

There are no specific diseases or infections that require vaccinations before coming, but some vaccinations can be made mandatory if a person comes from a country that has some potentially infectious or contagious disease.

#### EARLY ARRIVALS

Pilots are welcome to arrive before the competition. Official transport will only be available from the first practice task. However regular transport provided from the local Club “Papaventos” will be available. For further details see competition web site.

#### COSTUMS ARRANGMENTS

For all EU member countries there are no import tariffs for personal paragliding / sport equipment. Countries outside the EU the only limitations will be from their own country. Pilots from outside EU will need to contact the customs services in their own country to check requirements.

#### STATEMENT OF COMPLIANCE WITH FAI CODE ON THE ENVIRONMENT

Prior to submitting this bid we, the organizers, have considered the FAI Code for the environment in order to comply the environmental protection and nature conservation, namely:



1. Promote of awareness and responsible attitudes among paragliding enthusiasts about environmental matters.
2. Support environmental projects associated with the sports events.
3. Demonstrate how paragliding and their infrastructure make a positive contribution to the environment.

Lisbon, December 8, 2014

Eugénio de Almeida

President of Portuguese Free Flight Federation



## ANNEX B - PROVISIONAL BUDGE

EXPENDITURE	Value
<b>PREPARATION (over 2 years)</b>	<b>5 500 €</b>
Administration, post & bank charges, stationery	2 000 €
Travel expenses for organisers, volunteers	2 000 €
Setting up & maintaining website	1 500 €
<b>COMPETITION</b>	<b>78 720 €</b>
FAI Sanction Fee	5 120 €
FAI Officials (5): Travel, accommodation, meals, daily allowance, car rental	10 000 €
Rental of suitable HQ building/rooms/marquee for briefings (180 people+), meeting rooms, scoring room etc.	8 000 €
Rental/buy IT & equipment for HQ, launch, goalfields/target etc	5 000 €
Live Track from Flymaster	3 600 €
Road, airspace, turnpoint maps for pilots, team leaders & HQ	1 500 €
Tshirts	2 000 €
Trophies, day prizes, gifts for pilots	1 000 €
Transport	18 000 €
Medical services (doctor, paramedic, ambulance etc)	7 000 €
Option: Rental & cleaning of portable toilets	1 500 €
Option: Weather forecasting (presentations, daily soundings etc)	2 000 €
Option: packed lunches or snack/water for pilots/TLs	9 000 €
Contingency	5 000 €
<b>PERSONNEL</b>	<b>31 500 €</b>
Fees for Meet Director, Safety Director, Event organiser, Launch Marshal, Scorer etc.	18 500 €
Accommodation, Food/expenses for organisers, staff, volunteers, helpers 15 days	13 000 €
<b>CEREMONIES &amp; SOCIAL EVENTS</b>	<b>8 000 €</b>
Opening & Closing Ceremonies	6 000 €
Other social events (bbq, live music evening etc)	2 000 €
<b>MEDIA &amp; PROMOTION</b>	<b>27 000 €</b>
PR or Press person/services prior to & during event	3 000 €
Official blogger, photographer, video cameraman, film maker	3 000 €

Option: Film of the event for promotion of sport, region etc.	15 000 €
Promotional items: stickers, pens, mugs, postcards etc.	1 000 €
Press hospitality, local media coverage, souvenir program, newsletters, advertising etc.	5 000 €
<b>TOTAL EXPENDITURE</b>	<b>150 720 €</b>

<b>PROJECTED INCOME</b>	
Pilot fees	67 500 €
Team leader fees	3 000 €
Grant from local/host town	40 000 €
Grant from county or region	30 000 €
Grant from government sport department or similar	
Grant from national Federation or NAC	10 220 €
Sales of promotional items, productising	
Sponsorship	
<b>TOTAL INCOME</b>	<b>150 720 €</b>

## ANNEX C – LETTERS OF SUPPORT

### Municipality Letter



**CÂMARA MUNICIPAL DE MONTALEGRE**  
**PRESIDÊNCIA**

Exm<sup>o</sup> Senhor  
Presidente da Federação Portuguesa de Voo Livre  
Av. Cidade de Lourenço Marques  
Módulo 2 – Praceta B  
1800-093 LISBOA

Sua referência	V/ comunicação de	Nossa referência	Data
_____	____/____/____	GAP 113/ 2014	2014.12.11

**Assunto: Campeonato do Mundo de Parapente 2017**

Tendo em vista a realização do 15º Campeonato do Mundo de Parapente 2017, vimos evidenciar a V<sup>a</sup> Ex<sup>a</sup> algumas circunstância que julgamos da maior importância para a concretização de tal evento. Em primeiro lugar queremos realçar as ótimas condições do concelho de Montalegre para a prática dos desportos em contato com a natureza. Por outro lado, as condições naturais desta região, quer ao nível paisagístico quer em termos da biodiversidade conferem-lhe uma notoriedade singular.

O território do concelho de Montalegre é também considerado um dos locais de excelência para a prática do parapente, na serra do Larouco, com acesso ao cume, com muita facilidade e com uma evidente e crescente procura, tendo já acolhido, como é do seu conhecimento, diversas competições de âmbito nacional e internacional.

Importa referir igualmente que esta atividade é considerada como uma das alavancas principais para o desenvolvimento e crescimento económico do concelho e da própria região onde se insere.

Acresce também a boa localização do concelho de Montalegre, situado entre dois eixos rodoviários principais como são a A24 e A52 na Galiza.



**CÂMARA MUNICIPAL DE MONTALEGRE**  
**PRESIDÊNCIA**

Queremos ainda destacar a colaboração que esta Câmara Municipal tem vindo a manter com o Clube Papaventos, com sede em Montalegre, cujas instalações foram cedidas por este Município.

Neste sentido, comunicamos a V. Exa. a total disponibilidade de apoio, quer ao nível financeiro quer logístico, para assumirmos parceria na organização do 15.º Campeonato do Mundo de Parapente.

Com os melhores cumprimentos,

O PRESIDENTE DA CÂMARA



Manuel Orlando Fernandes Alves



## Translation of Municipality Letter

CAMARA MUNICIPAL DE MONTALEGRE - PRESIDENCIA

Exmº Senhor

Presidente da Federação Portuguesa de Voo Livre

Av. Cidade de Lourenço Marques

Módulo 2— Praceta B

1800-093 LISBOA

Our ref: GAP 113/2014

Date: 2014.12.11

Subject: World Paragliding World Championship 2017

Concerning the realization of the World Paragliding Championship 2017 we would like to evidence some circumstances we think are of great importance for the realization of such an event. First we want to highlight the great natural conditions of the Montalegre region for the practice of nature sports. Beyond the natural conditions, the region presents unique landscapes and biodiversity that gives it a unique reputation

Montalegre is also considered an excellent local for paragliding practice, with easy access to the top of Lauroco mountain, it presents a crescent demanding, having already been the scene of many national and international events.

It should also be noted that this activity is considered by the Municipality, as one of the levers for economic development of the region

Moreover, the good location of the Montalegre municipality, situated between two major roads such as the A24 and A52 (in Galicia).

We also want to highlight the good collaboration that this City Council has maintained with Papaventos Club, based in Montalegre, whose facilities have been provided by the municipality. In this sense, we inform about our total availability to support, at financial and logistical levels, the organization of Paragliding World Championship 2017.

Best Regards,

CHAMBER PRESIDENT

Manuel Orlando Fernandes Alves

## NAC Letter



### CONTACTOS

Sede: Rua General  
Pimenta de Castro, 4C  
1700-218 Lisboa

Tlf: 21 847 25 79  
21 840 53 17  
Fax: 21 445 32 83

E-mail: mail@aecp.pt

Base Operacional em  
Tires: 21 444 07 08  
93 775 80 95

www.aecp.pt



Titular da Comenda da Ordem Militar de Cristo



To  
CIVL President  
Fédération Aéronautique Internationale  
Maison du Sport International  
Avenue du Rhodanie, 54  
CH-1007 LAUSANNE (Switzerland)

V/ Ref:  
N/ Ref: 220.14  
Data: 20 October 2014

### Assunto: 15th FAI World Paragliding Championship in Portugal

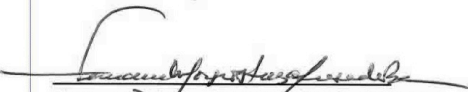
Dear President  
Dear Delegates of FAI/CIVL

In Relation to the application submitted by the Federação Portuguesa de Voo Livre ("FPVL" Portuguese Free Flight Federation) to organize the 15th FAI World Paragliding Championship in Portugal, the Aero Club de Portugal ("AeCP"), as Portugal's NAC, hereby states its full support to FPVL request.

The AeCP pledges to give all necessary assistance and believes FPVL organisation skills and expertise in world class sporting events will ensure the success of the competition.

It is noteworthy FPVL has previously organized competitions of this size and complexity, in particular the FAI World Paragliding Championship in 2003. Therefore the AeCP is deeply convinced of FPVL's ability to make this an exemplary event, thus reinforcing FAI/CIVL Category I events credibility by way of setting a new standard.

Yours Sincerely,

  
Fernando Jorge Esteves Graça da Rosa  
AeCP Secretary General



Membro e Representante de Portugal na FAI – "Fédération Aéronautique Internationale"

NAC – "National Air Sports Control"

Membro e Representante em Portugal da EAS – "European Air Sports"



## ANNEX D – HOW TO REACH TO MONTALEGRE

The Event headquarters will be placed at “Pavilhão Multiusos” at Montalegre Village. Montalegre is easily reached by road, from the main cities airports:

- 475km from Lisbon – about 4h25m by car
- 175km from Oporto – about 2h00m by car

Both Lisbon and Oporto Towns have International Airports. Next a list of the main Rent-a-car companies with airport offices:

### LISBON INTERNATIONAL AIRPORT

Rent-a-car	Telephone
<a href="#">AA Castanheira/ Budget</a>	(+351) 219 942 402
<a href="#">Europcar/ National/ Alamo/ Europcar SA</a>	(+351) 218 401 176
<a href="#">Guerin / Guérin Lda.</a>	(+351) 218 486 191
<a href="#">Auto Jardim/ Auto Jardim SA</a>	(+351) 218 462 916
<a href="#">Hertz/ HR, SA</a>	(+351) 218 438 660
<a href="#">SIXT/ Auro Rent Lda.</a>	(+351) 218 470 661
<a href="#">AVIS/ Sovial Lda.</a>	(+351) 218 435 550

### OPORTO INTERNATIONAL AIRPORT

Rent-a-car	Telephone
<a href="#">A.A. Castanheira / Budget</a>	+(351) 229 443 914
<a href="#">Auto Jardim/ Auto Jardim do Algarve SA</a>	+(351) 229 413 661
<a href="#">Avis / Sovial, Lda.</a>	+(351) 229 436 900
<a href="#">Europcar/ National/ Alamo/ Europcar SA</a>	+(351) 229 482 452
<a href="#">Hertz/ HR, SA</a>	+(351) 229 437 690
<a href="#">Guerin/ Guérin Lda.</a>	+(351) 229 415 939
<a href="#">SIXT/ Auro Rent Lda.</a>	+(351) 229 440 111

It is also possible to fly to Madrid or Santiago Compostela,

- From Santiago Compostela are about 180 km, 2h10m by car
- From Madrid are about 475km to Montalegre – about 4h35m

## ANNEX E – PLACES TO STAY

### Montalegre Hotel \*\*\*\* (Oficial Hotel)



<http://www.montalegrehotel.com/>  
More informations: [info@montalegrehotel.com](mailto:info@montalegrehotel.com)

---

### Turismo de Aldeia Penedonos

8 houses near the village  
3 T0; 4 T1; 1 T2 - Total de quartos = 1

More informations:  
<http://www.cm-montalegre.pt/showPG.php?Id=274>  
[casaspenedones@ecomuseu.org](mailto:casaspenedones@ecomuseu.org)

---

### Naturbarroso

"Casa Entre Palheiros" – Huose with 5 double rooms (all with WC).

"O Castelo" – 5 double rooms (all with WC)

<http://www.termontalegre.net/>  
Email: [geral@naturbarroso.net](mailto:geral@naturbarroso.net)  
Tel.: +351 276 518 125  
Tele: +351 965 663 068; +351 935 663 060

---

### Casa Fontes da Mijareta – Rural Turism

[www.padrefontes.com](http://www.padrefontes.com)  
[casafontesmijareta@gmail.com](mailto:casafontesmijareta@gmail.com)  
Tel.: +351 276 518 241 / +351 276 510 260  
Tele: +351 936 428 015 / +351 938 211 846  
Fax: +351 276 518 241

---

### Aquabarroso / Camping Parque 9km From Montalegre

Camping park with guard

<http://www.cm-montalegre.pt/showPG.php?Id=166>  
Email: [aquabarroso@gmail.com](mailto:aquabarroso@gmail.com)  
Tel.: +351 276 511 010

---

### Hotel Aquae Flaviae \*\*\* (Chaves)



<http://www.Hotel-Aquae-Flaviae-Premium-Chaves/comercial.haf@hoteis-arco.com>  
Tel. +351 276 309 000

---

## Petrus Hotel \*\*\* (Chaves)



<http://www.petrushotel.com/>  
[info@petrushotel.com](mailto:info@petrushotel.com)  
Tel. +351 276 351 500

---

## Another places to Stay

Please check the Link

<http://www.cm-montalegre.pt/showPG.php?Id=131>

---



## ANNEX F – SITES

In the same Mountain – Serra do Larouco, there exists Take-offs suitable for all Wind Directions, that can be reached in 10 min by car.



Since July 2014, there is a asphalt/tarmac road to the main Take-offs (South, East and West).



From

Montalegre, Headquarters to the several Take-Offs, it takes 15 minutes by car.



The Headquarters will be based in the Pavilhão Multiusos, with an area of 2000m<sup>2</sup>, that has all the conditions to receive the pilots, Teams and Equipments. It has several ample spaces, including place to check the gliders indoor.

It also has one amphitheater, with 2 floors, with 320 seated places. Some photos in other events of paragliding:

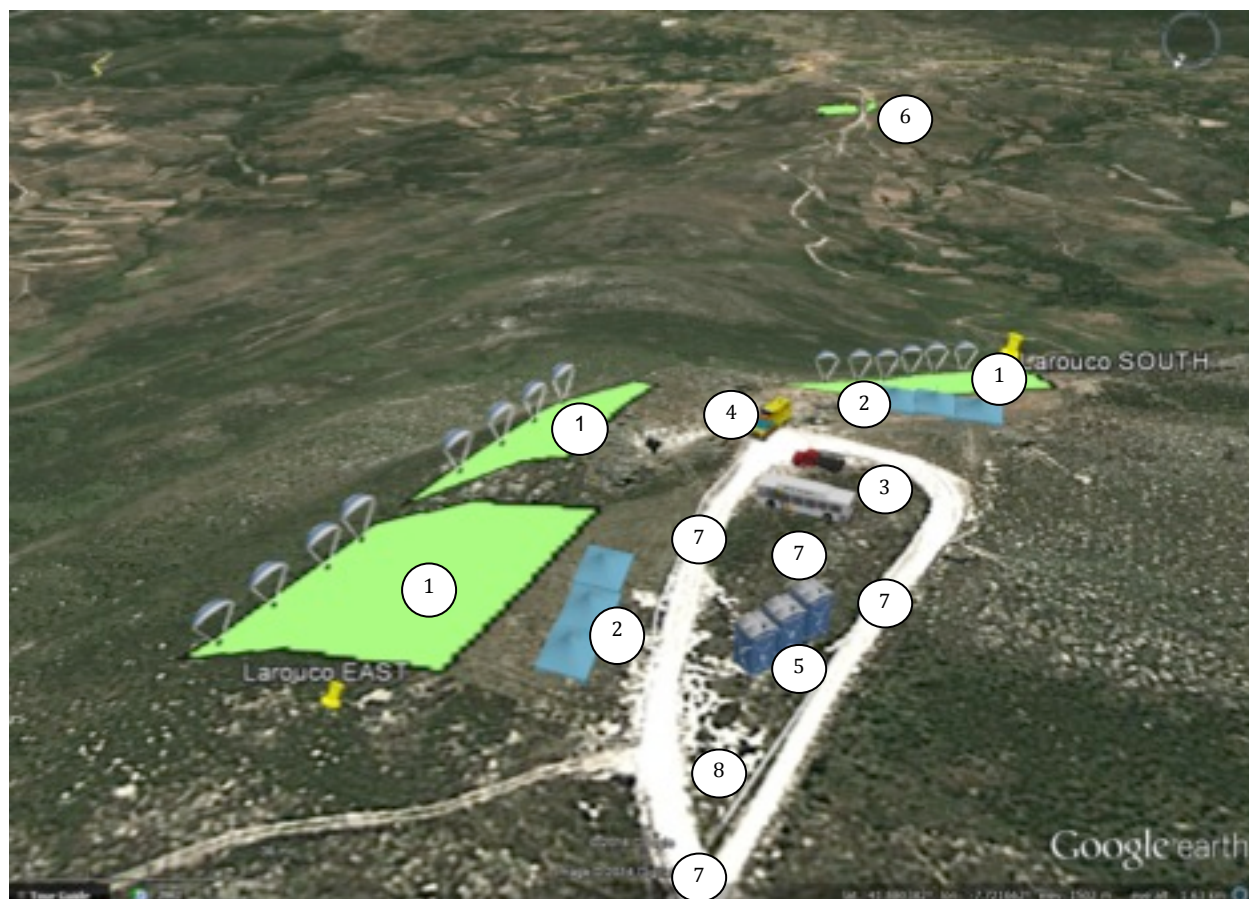


### **SOUTH and EAST Takeoffs.**

Possible for winds: South / South West / South East / East.

Also possible for weak winds from North and West





- ① - Takeoff Areas
- ② - Shelter and Media Tents
- ③ - Organization Park (Now its all in tarmac road)
- ④ - Ambulance
- ⑤ - Portable WCs
- ⑥ - Landing Areas
- ⑦ - Tarmac Road, since July 2014
- ⑧ - Public Parking Areas

## WEST Takeoff.

Possible for winds: West / South West / North West.



- ① - Takeoff Area
- ② - Shelter and Media Tents
- ③ - Organization Park
- ④ - Ambulance
- ⑤ - Landing Areas
- ⑥ - Tarmac Road, since July 2014
- ⑦ - Public Parking Areas



## **NORTH Takeoff.**

Possible for winds: North / North West / North East.



- ① - Takeoff Areas
- ② - Shelter and Media Tents
- ③ - Organization Park (Now its all in tarmac road)
- ④ - Ambulance
- ⑤ - Portable WCs
- ⑥ - Landing Area
- ⑦ - Public Parking Areas